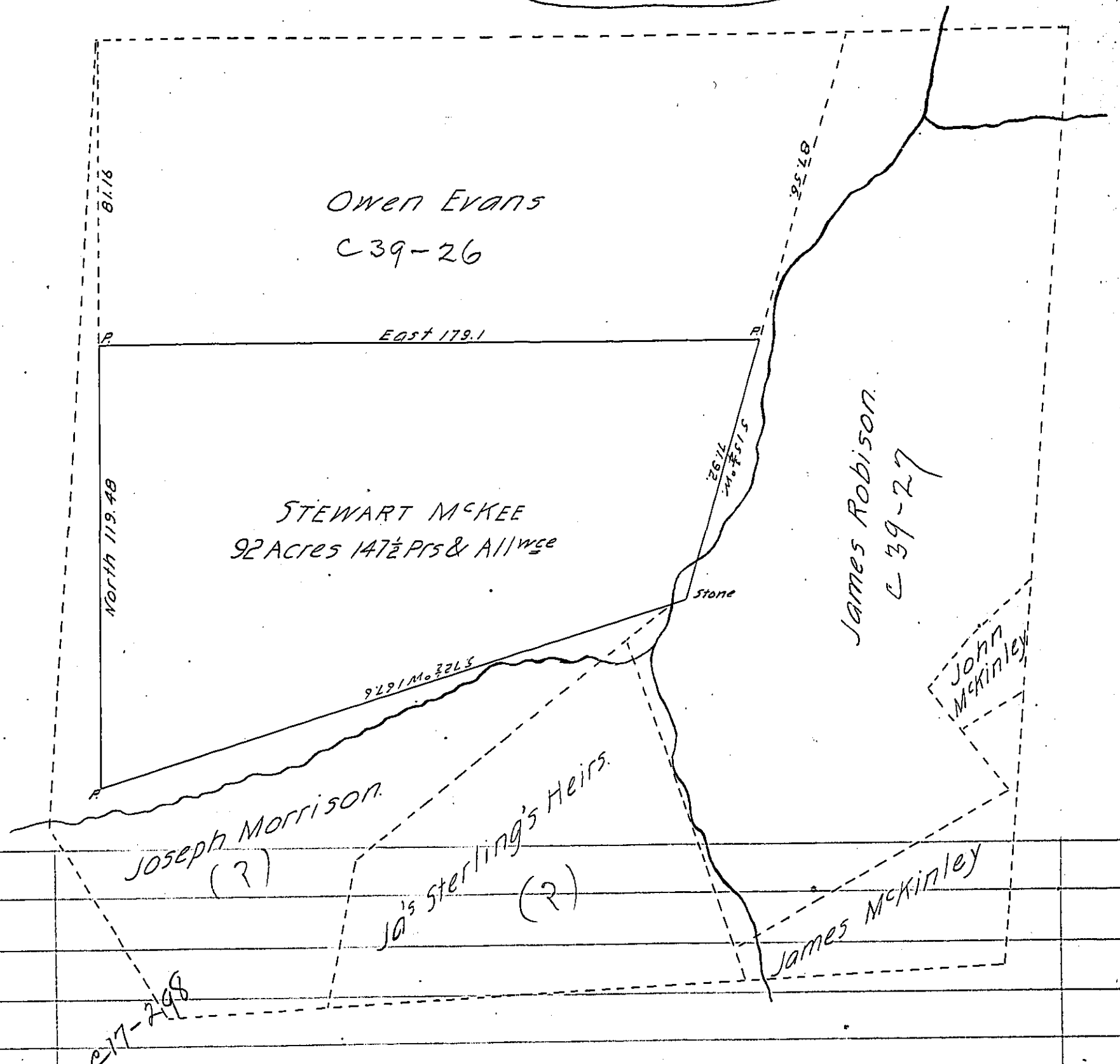


See D-45-8



Draught of a tract of land the property of Stewart McKee, containing 92A. 147 1/2 P. and allowance of six per cent. and surveyed the 16th January 1865; situate in Moon township, Allegheny County, Penna being part of an original tract called "Rotterdam", then surveyed on the 24th day of December 1785, on a Warrant dated the 30th day of April 1785, in the name of Francis F. Baronde Beelen Bertholff, on the "Narrows Run"

To) Jas P. Barr Esq.
Surveyor General
Harrisburg, Pa.

E. H. Hastings

IN TESTIMONY that the above is a copy of the original remaining on file in the Department of Internal Affairs of Pennsylvania, made conformably to an Act of Assembly approved the 16th day of February, 1833, I have hereunto set my Hand and caused the Seal of said Department to be affixed at Harrisburg, this third day of May 1904.

James P. Barr
Secretary of Internal Affairs.